

Understanding the Changes to the Checklist

Changes to the common or scientific names

Any departure from the Christidis and Boles (1994) Checklist with regard to either the common name or scientific name has been highlighted in orange type.

Subscripts after the common name:

E = extinct

V = vagrant to Australia (fewer than 10 records)

I = introduced to Australia

A = Ashmore Reef

AAT = Australian Antarctic Territory

C = Christmas Island

CK = Cocos Keeling Islands

H = Heard Island

LH = Lord Howe Island

M = Macquarie Island

N = Norfolk Island

TS = Torres Strait Islands

References

Christidis, L. and W.E. Boles. (1994) *The Taxonomy and Species of Birds of Australia and its Territories*. RAOU Monograph No. 2. Royal Australasian Ornithologists Union, Melbourne.

Christidis, L. and W.E. Boles. (2008) *Systematics and Taxonomy of Australian Birds*. CSIRO Publishing, Melbourne.



Birds Australia
CONSERVATION THROUGH KNOWLEDGE

Common Name	Scientific Name	Atlas Number	Chistidis & Boles (1994)
STRUTHIONIFORMES			
Struthionidae			
Ostrich ^{IE?}	<i>Struthio camelus</i>	928	
CASUARIIFORMES			
Casuariidae			
Southern Cassowary	<i>Casuarius casuarius</i>	2	
Emu	<i>Dromaius novaehollandiae</i>	1	
King Island Emu ^E	<i>Dromaius ater</i>	740	
Kangaroo Island Emu ^E	<i>Dromaius baudinianus</i>	741	
GALLIFORMES			
Megapodiidae			
Australian Brush-turkey	<i>Alectura lathamii</i>	8	
Malleefowl	<i>Leipoa ocellata</i>	7	
Orange-footed Scrubfowl	<i>Megapodius reinwardt</i>	6	
Numididae			
Helmeted Guineafowl ^l	<i>Numida meleagris</i>		supplementary list
Odontophoridae			
California Quail ^l	<i>Callipepla californica</i>	901	
Phasianidae			
Stubble Quail	<i>Coturnix pectoralis</i>	9	
Brown Quail	<i>Coturnix ypsilophora</i>	11	
King Quail	<i>Excalfactoria chinensis</i>	12	<i>Coturnix</i>
Indian Peafowl ^l	<i>Pavo cristatus</i>	903	
Red Junglefowl ^l	<i>Gallus gallus</i>	902	
Green Junglefowl ^{CK/I}	<i>Gallus varius</i>	752	supplementary list
Common Pheasant ^l	<i>Phasianus colchicus</i>	950	
Wild Turkey ^l	<i>Meleagris gallopavo</i>	778	
ANSERIFORMES			
Anseranatidae			
Magpie Goose	<i>Anseranas semipalmata</i>	199	
Anatidae			
Spotted Whistling-Duck	<i>Dendrocygna guttata</i>	745	not on list
Plumed Whistling-Duck	<i>Dendrocygna eytoni</i>	205	



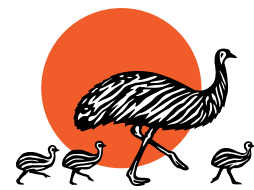
Wandering Whistling-Duck	<i>Dendrocygna arcuata</i>	204	
Musk Duck	<i>Biziura lobata</i>	217	
Freckled Duck	<i>Stictonetta naevosa</i>	214	
Cape Barren Goose	<i>Cereopsis novaehollandiae</i>	198	
Black Swan	<i>Cygnus atratus</i>	203	
Mute Swan ^l	<i>Cygnus olor</i>	906	
Canada Goose ^{VI}	<i>Branta canadensis</i>	799	
Radjah Shelduck	<i>Tadorna radjah</i>	206	
Australian Shelduck	<i>Tadorna tadornoides</i>	207	
Paradise Shelduck ^{LHV}	<i>Tadorna variegata</i>	798	
Australian Wood Duck	<i>Chenonetta jubata</i>	202	
Pink-eared Duck	<i>Malacorhynchus membranaceus</i>	213	
Cotton Pygmy-goose	<i>Nettapus coromandelianus</i>	200	
Green Pygmy-goose	<i>Nettapus pulchellus</i>	201	
Garganey	<i>Anas querquedula</i>	209	
Australasian Shoveler	<i>Anas rhynchotis</i>	212	
Northern Shoveler ^V	<i>Anas clypeata</i>	905	
Grey Teal	<i>Anas gracilis</i>	211	
Chestnut Teal	<i>Anas castanea</i>	210	
Northern Pintail ^V	<i>Anas acuta</i>	800	
Kerguelen Pintail ^{AA1V}	<i>Anas eatoni</i>	759	not on list
Northern Mallard ^l	<i>Anas platyrhynchos</i>	948	Mallard
Pacific Black Duck	<i>Anas superciliosa</i>	208	
Hardhead	<i>Aythya australis</i>	215	
Blue-billed Duck	<i>Oxyura australis</i>	216	
PHAETHONTIFORMES			new order; split from Pelecaniformes
Phaethontidae			
Red-tailed Tropicbird	<i>Phaethon rubricauda</i>	107	
White-tailed Tropicbird	<i>Phaethon lepturus</i>	108	
PODICIPEDIFORMES			
Podicipedidae			
Australasian Grebe	<i>Tachybaptus novaehollandiae</i>	61	
Little Grebe ^V	<i>Tachybaptus ruficollis</i>	3004	not on list
Hoary-headed Grebe	<i>Poliiocephalus poliocephalus</i>	62	



Great Crested Grebe	<i>Podiceps cristatus</i>	60	
PHOENICOPTERIFORMES			
Phoenicopteridae			
Greater Flamingo ^{CK/V}	<i>Phoenicopterus ruber</i>	777	
COLUMBIFORMES			
Columbidae			
Rock Dove	<i>Columba livia</i>	957	
White-throated Pigeon ^{LF/E}	<i>Columba vitiensis</i>	756	
White-headed Pigeon	<i>Columba leucomela</i>	28	
Barbary Dove	<i>Streptopelia roseogrisea</i>		not on list
Red Collared Dove ^{CV}	<i>Streptopelia tranquebarica</i>		not on list
Laughing Dove ¹	<i>Streptopelia senegalensis</i>	988	Laughing Turtle-Dove
Spotted Dove ¹	<i>Streptopelia chinensis</i>	989	Spotted Turtle-Dove
Brown Cuckoo-Dove	<i>Macropygia amboinensis</i>	29	
Emerald Dove	<i>Chalcophaps indica</i>	33	
Common Bronzewing	<i>Phaps chalcoptera</i>	34	
Brush Bronzewing	<i>Phaps elegans</i>	35	
Flock Bronzewing	<i>Phaps histrionica</i>	36	
Crested Pigeon	<i>Ocyphaps lophotes</i>	43	
Spinifex Pigeon	<i>Geophaps plumifera</i>	42	
Partridge Pigeon	<i>Geophaps smithii</i>	40	
Squatter Pigeon	<i>Geophaps scripta</i>	39	
White-quilled Rock-Pigeon	<i>Petrophassa albipennis</i>	37	
Chestnut-quilled Rock-Pigeon	<i>Petrophassa rufipennis</i>	38	
Diamond Dove	<i>Geopelia cuneata</i>	31	
Peaceful Dove	<i>Geopelia striata</i>	30	
Bar-shouldered Dove	<i>Geopelia humeralis</i>	32	
Wonga Pigeon	<i>Leucosarcia picata</i>	44	<i>L. melanoleuca</i>
Norfolk Island Ground-Dove ^{NE}	<i>Gallicolumba norfolciensis</i>		
Banded Fruit-Dove	<i>Ptilinopus cinctus</i>	24	
Wompoo Fruit-Dove	<i>Ptilinopus magnificus</i>	25	
Superb Fruit-Dove	<i>Ptilinopus superbus</i>	23	
Rose-crowned Fruit-Dove	<i>Ptilinopus regina</i>	21	
Orange-bellied Fruit-Dove ^{TS/V}	<i>Ptilinopus iozonus</i>		not on list



Elegant Imperial-Pigeon ^V	<i>Ducula concinna</i>	769	
Christmas Island Imperial-Pigeon ^C	<i>Ducula whartoni</i>	805	
Collared Imperial-Pigeon ^{TSV}	<i>Ducula mullerii</i>	793	
Pied Imperial-Pigeon	<i>Ducula bicolor</i>	26	
Topknot Pigeon	<i>Lopholaimus antarcticus</i>	27	
New Zealand Pigeon ^{NE}	<i>Hemiphaga novaeseelandiae</i>	737	
CAPRIMULGIFORMES			
Podargidae			
Tawny Frogmouth	<i>Podargus strigoides</i>	313	
Papuan Frogmouth	<i>Podargus papuensis</i>	316	
Marbled Frogmouth	<i>Podargus ocellatus</i>	314	
Eurostopodidae			
White-throated Nightjar	<i>Eurostopodus mystacalis</i>	330	new family; split from Caprimulgidae
Spotted Nightjar	<i>Eurostopodus argus</i>	331	
Caprimulgidae			
Large-tailed Nightjar	<i>Caprimulgus macrurus</i>	332	
Savanna Nightjar ^{CV}	<i>Caprimulgus affinis</i>	765	
Grey Nightjar ^{AVV}	<i>Caprimulgus indicus</i>		not on list
APODIFORMES			
Aegothelidae			
Australian Owlet-nightjar	<i>Aegotheles cristatus</i>	317	moved from Caprimulgiformes
Apodidae			
Glossy Swiftlet ^V	<i>Collocalia esculenta</i>	882	
Linchi Swiftlet ^C	<i>Collocalia linchi</i>		treated as conspecific with Glossy Swiftlet <i>C. esculenta</i>
Australian Swiftlet	<i>Aerodramus terrareginae</i>	333	treated as conspecific with White-rumped Swiftlet <i>Collocalia spodiopygius</i>
Uniform Swiftlet ^V	<i>Aerodramus vanikorensis</i>	881	
White-throated Needletail	<i>Hirundapus caudacutus</i>	334	
Papuan Spine-tailed Swift ^{TSV}	<i>Mearnsia novaeguineae</i>		not on list
Fork-tailed Swift	<i>Apus pacificus</i>	335	
House Swift ^V	<i>Apus affinis</i>	828	
PROCELLARIFORMES			
Hydrobatidae			
Swinhoe's Storm-Petrel ^V	<i>Hydrobates monorhis</i>	812	not on list
Leach's Storm-Petrel ^V	<i>Hydrobates leucorhoa</i>	911	<i>Oceanodroma</i>



Tristram's Storm-Petrel ^V	<i>Hydrobates tristrami</i>	811	not on list
Matsudaira's Storm-Petrel ^{V,CV}	<i>Hydrobates matsudairae</i>	802	<i>Oceanodroma</i>
Oceanitidae			split from Hydrobatidae
Wilson's Storm-Petrel	<i>Oceanites oceanicus</i>	63	
Grey-backed Storm-Petrel	<i>Garrodia nereis</i>	64	
White-faced Storm-Petrel	<i>Pelagodroma marina</i>	65	
Black-bellied Storm-Petrel	<i>Fregetta tropica</i>	66	
White-bellied Storm-Petrel ^{V,LH}	<i>Fregetta grallaria</i>	944	
Diomedidae			
Wandering Albatross	<i>Diomedea exulans</i>	86	
Royal Albatross	<i>Diomedea epomophora</i>	974	
Laysan Albatross ^V	<i>Phoebastria immutabilis</i>	738	<i>Diomedea</i> ; supplementary list
Black-browed Albatross	<i>Thalassarche melanophris</i>	88	<i>Diomedea</i>
Shy Albatross	<i>Thalassarche cauta</i>	91	<i>Diomedea</i>
Grey-headed Albatross	<i>Thalassarche chrysostoma</i>	90	<i>Diomedea</i>
Yellow-nosed Albatross	<i>Thalassarche chlororhynchos</i>	89	<i>Diomedea</i>
Buller's Albatross	<i>Thalassarche bulleri</i>	931	<i>Diomedea</i>
Sooty Albatross	<i>Phoebastria fusca</i>	92	
Light-mantled Sooty Albatross	<i>Phoebastria palpebrata</i>	93	
Procellariidae			
Southern Giant-Petrel	<i>Macronectes giganteus</i>	929	
Northern Giant-Petrel	<i>Macronectes halli</i>	937	
Southern Fulmar	<i>Fulmarus glacialisoides</i>	74	
Antarctic Petrel	<i>Thalassoica antarctica</i>	949	
Cape Petrel	<i>Daption capense</i>	80	
Snow Petrel ^{HV}	<i>Pagodroma nivea</i>	984	
Blue Petrel	<i>Halobaena caerulea</i>	81	
Broad-billed Prion	<i>Pachyptila vittata</i>	82	
Salvin's Prion	<i>Pachyptila salvini</i>	941	
Antarctic Prion	<i>Pachyptila desolata</i>	84	
Slender-billed Prion	<i>Pachyptila belcheri</i>	942	
Fairy Prion	<i>Pachyptila turtur</i>	83	
Fulmar Prion ^{V,H}	<i>Pachyptila crassirostris</i>	947	
White-chinned Petrel	<i>Procellaria aequinoctialis</i>	915	



Westland Petrel ^V	<i>Procellaria westlandica</i>	916	
Black Petrel	<i>Procellaria parkinsoni</i>	917	
Grey Petrel	<i>Procellaria cinerea</i>	73	
Bulwer's Petrel ^V	<i>Bulweria bulwerii</i>	776	
Jouanin's Petrel ^V	<i>Bulweria fallax</i>	762	not on list
Wedge-tailed Shearwater	<i>Ardenna pacifica</i>	69	<i>Puffinus pacific us</i>
Buller's Shearwater	<i>Ardenna bulleri</i>	975	<i>Puffinus</i>
Flesh-footed Shearwater	<i>Ardenna carneipes</i>	72	<i>Puffinus</i>
Pink-footed Shearwater ^V	<i>Ardenna creatopus</i>	772	<i>Puffinus</i>
Great Shearwater ^V	<i>Ardenna gravis</i>	771	<i>Puffinus</i>
Sooty Shearwater	<i>Ardenna grisea</i>	70	<i>Puffinus grise us</i>
Short-tailed Shearwater	<i>Ardenna tenuirostris</i>	71	<i>Puffinus</i>
Streaked Shearwater	<i>Calonectris leucomelas</i>	853	
Manx Shearwater ^V	<i>Puffinus puffinus</i>	914	
Newell's Shearwater ^V	<i>Puffinus newelli</i>	739	not on list
Fluttering Shearwater	<i>Puffinus gavia</i>	68	
Hutton's Shearwater	<i>Puffinus huttoni</i>	913	
Audubon's Shearwater ^V	<i>Puffinus lherminieri</i>	912	
Little Shearwater	<i>Puffinus assimilis</i>	67	
Tahiti Petrel	<i>Pseudobulweria rostrata</i>	920	
Kerguelen Petrel	<i>Lugensa brevirostris</i>	935	
Barau's Petrel ^V	<i>Pterodroma barau</i>	775	
Juan Fernandez Petrel ^V	<i>Pterodroma externa</i>	810	
Kermadec Petrel ^{V,LRN}	<i>Pterodroma neglecta</i>	922	
Herald Petrel	<i>Pterodroma heraldica</i>	921	treated as conspecific with Herald Petrel <i>P. arminjoniana</i>
Soft-plumaged Petrel	<i>Pterodroma mollis</i>	76	
White-headed Petrel	<i>Pterodroma lessonii</i>	77	
Great-winged Petrel	<i>Pterodroma macroptera</i>	75	
Providence Petrel	<i>Pterodroma solandri</i>	971	
Mottled Petrel	<i>Pterodroma inexpectata</i>	919	
Gould's Petrel	<i>Pterodroma leucoptera</i>	78	
Cook's Petrel ^V	<i>Pterodroma cookii</i>	918	
White-necked Petrel ^{V,N}	<i>Pterodroma cervicalis</i>	774	
Vanuatu Petrel ^V	<i>Pterodroma occulta</i>		treated as conspecific with White-necked Petrel <i>P. cervicalis</i>



Black-winged Petrel	<i>Pterodroma nigripennis</i>	955	
Atlantic Petrel ^V	<i>Pterodroma incerta</i>	773	supplementary list
Common Diving-Petrel	<i>Pelecanoides urinatrix</i>	85	
South Georgian Diving-Petrel ^{V,MH}	<i>Pelecanoides georgicus</i>	910	
SPHENISCIFORMES			
Spheniscidae			
King Penguin ^{V,MH}	<i>Aptenodytes patagonicus</i>	927	
Emperor Penguin ^{HV}	<i>Aptenodytes forsteri</i>	804	
Gentoo Penguin ^{V,MH}	<i>Pygoscelis papua</i>	926	
Adelie Penguin ^{MV,HV}	<i>Pygoscelis adeliae</i>	924	
Chinstrap Penguin ^{V,HV}	<i>Pygoscelis antarcticus</i>	925	<i>P. antarctic a</i>
Rockhopper Penguin ^{V,MH}	<i>Eudyptes chrysocome</i>	3	
Fiordland Penguin	<i>Eudyptes pachyrhynchus</i>	4	<i>Snares Penguin E.p. robustus</i> treated as separate species
Erect-crested Penguin ^V	<i>Eudyptes sclateri</i>	959	
Macaroni Penguin ^{V,MH}	<i>Eudyptes chrysolophus</i>	968	
Little Penguin	<i>Eudyptula minor</i>	5	
Magellanic Penguin ^V	<i>Spheniscus magellanicus</i>	858	
PHALACROCORACIFORMES			
new order; split from Pelecaniformes			
Fregatidae			
Lesser Frigatebird	<i>Fregata ariel</i>	95	
Great Frigatebird	<i>Fregata minor</i>	94	
Christmas Island Frigatebird ^{V,C,CKV}	<i>Fregata andrewsi</i>	909	<i>Christmas Frigatebird</i>
Sulidae			
Abbott's Booby ^{V,CAV}	<i>Papasula abbotti</i>	854	
Cape Gannet ^V	<i>Morus capensis</i>	825	
Australasian Gannet	<i>Morus serrator</i>	104	
Masked Booby	<i>Sula dactylatra</i>	105	<i>Tasman Booby S.d. tasmani</i> treated as separate species
Red-footed Booby	<i>Sula sula</i>	103	
Brown Booby	<i>Sula leucogaster</i>	102	
Anhingidae			
Australasian Darter	<i>Anhinga novaehollandiae</i>	101	treated as conspecific with <i>Darter A. melanogaster</i>
Phalacrocoracidae			
Little Pied Cormorant	<i>Microcarbo melanoleucos</i>	100	<i>Phalacrocorax</i>
Great Cormorant	<i>Phalacrocorax carbo</i>	96	



Little Black Cormorant	<i>Phalacrocorax sulcirostris</i>	97	
Pied Cormorant	<i>Phalacrocorax varius</i>	99	
Black-faced Cormorant	<i>Phalacrocorax fuscescens</i>	98	
Imperial Shag ^{MH}	<i>Leucocarbo atriceps</i>	970	
Kerguelen Shag ^V	<i>Leucocarbo verrucosus</i>	803	supplementary list
CICONIIFORMES			
Pelecanidae			
Australian Pelican	<i>Pelecanus conspicillatus</i>	106	moved from Pelecaniformes
Ciconiidae			
Black-necked Stork	<i>Ephippiorhynchus asiaticus</i>	183	
Ardeidae			
Australasian Bittern	<i>Botaurus poiciloptilus</i>	197	
Australian Little Bittern	<i>Ixobrychus dubius</i>	195	treated as conspecific with <i>Little Bittern I. minutus</i>
Yellow Bittern ^{V, CV}	<i>Ixobrychus sinensis</i>	907	
Schrenk's Bittern ^{CV}	<i>Ixobrychus eurhythmus</i>	754	not on list
Cinnamon Bittern ^{CV}	<i>Ixobrychus cinnamomeus</i>	842	not on list
Black Bittern	<i>Ixobrychus flavicollis</i>	196	
Grey Heron ^V	<i>Ardea cinerea</i>	908	supplementary list
White-necked Heron	<i>Ardea pacifica</i>	189	
Eastern Great Egret	<i>Ardea modesta</i>	187	treated as conspecific with <i>Great Egret A. alba</i>
Intermediate Egret	<i>Ardea intermedia</i>	186	
Great-billed Heron	<i>Ardea sumatrana</i>	184	
Cattle Egret	<i>Ardea ibis</i>	977	
Striated Heron	<i>Butorides striata</i>	193	
Chinese Pond Heron ^{CKV}	<i>Ardeola bacchus</i>		not on list
Javan Pond Heron ^V	<i>Ardeola speciosa</i>		not on list
Pied Heron	<i>Egretta picata</i>	190	<i>Ardea</i>
White-faced Heron	<i>Egretta novaehollandiae</i>	188	
Little Egret	<i>Egretta garzetta</i>	185	
Eastern Reef Egret	<i>Egretta sacra</i>	191	
Black-crowned Night-Heron ^{CKV}	<i>Nycticorax nycticorax</i>	796	
Nankeen Night-Heron	<i>Nycticorax caledonicus</i>	192	
Malayan Night-Heron ^{CV}	<i>Gorsachius melanolophus</i>	797	
Threskiornithidae			



Glossy Ibis	<i>Plegadis falcinellus</i>	178	
Australian White Ibis	<i>Threskiornis molucca</i>	179	
Straw-necked Ibis	<i>Threskiornis spinicollis</i>	180	
Royal Spoonbill	<i>Platalea regia</i>	181	
Yellow-billed Spoonbill	<i>Platalea flavipes</i>	182	
ACCIPITRIFORMES			new order; split from Falconiformes
Accipitridae			
Eastern Osprey	<i>Pandion cristatus</i>	241	treated as conspecific with Osprey <i>P. haliaetus</i>
Black-shouldered Kite	<i>Elanus axillaris</i>	232	
Letter-winged Kite	<i>Elanus scriptus</i>	233	
Square-tailed Kite	<i>Lophoictinia isura</i>	230	
Black-breasted Buzzard	<i>Hamirostra melanosternon</i>	231	
Oriental Honey-buzzard ^{V,CV}	<i>Pernis ptilorhynchus</i>	792	not on list
Pacific Baza	<i>Aviceda subcristata</i>	234	
White-bellied Sea-Eagle	<i>Haliaeetus leucogaster</i>	226	
Whistling Kite	<i>Haliastur sphenurus</i>	228	
Brahminy Kite	<i>Haliastur indus</i>	227	
Black Kite	<i>Milvus migrans</i>	229	
Brown Goshawk	<i>Accipiter fasciatus</i>	221	
Collared Sparrowhawk	<i>Accipiter cirrocephalus</i>	222	
Variable Goshawk ^C	<i>Accipiter hiogaster</i>		treated as conspecific with Brown Goshawk <i>A. fasciatus</i>
Grey Goshawk	<i>Accipiter novaehollandiae</i>	220	
Spotted Harrier	<i>Circus assimilis</i>	218	
Swamp Harrier	<i>Circus approximans</i>	219	
Red Goshawk	<i>Erythrotriorchis radiatus</i>	223	
Gurney's Eagle ^{TS/V}	<i>Aquila gurneyi</i>	801	
Wedge-tailed Eagle	<i>Aquila audax</i>	224	
Little Eagle	<i>Hieraaetus morphnoides</i>	225	
FALCONIFORMES			
Falconidae			
Nankeen Kestrel	<i>Falco cenchroides</i>	240	
Brown Falcon	<i>Falco berigora</i>	239	
Australian Hobby	<i>Falco longipennis</i>	235	
Grey Falcon	<i>Falco hypoleucos</i>	236	



Black Falcon	<i>Falco subniger</i>	238	
Peregrine Falcon	<i>Falco peregrinus</i>	237	
GRUIFORMES			
Gruidae			
Sarus Crane	<i>Grus antigone</i>	898	
Brolga	<i>Grus rubicunda</i>	177	
Rallidae			
Purple Swamphen	<i>Porphyrio porphyrio</i>	58	
White Gallinule ^{LH,E}	<i>Porphyrio albus</i>	746	
Chestnut Rail	<i>Eulabeornis castaneiventris</i>	47	
Red-necked Crake	<i>Rallina tricolor</i>	48	
Red-legged Crake ^V	<i>Rallina fasciata</i>	900	
Lewin's Rail	<i>Levinia pectoralis</i>	45	<i>Rallus</i>
Buff-banded Rail	<i>Gallirallus philippensis</i>	46	
Lord Howe Woodhen ^{LH}	<i>Gallirallus sylvestris</i>	966	
Corncrake ^V	<i>Crex crex</i>	899	supplementary list
Baillon's Crake	<i>Porzana pusilla</i>	50	
Australian Spotted Crake	<i>Porzana fluminea</i>	49	
Ruddy-breasted Crake ^{CV}	<i>Porzana fusca</i>	715	
Spotless Crake	<i>Porzana tabuensis</i>	51	
White-browed Crake	<i>Amauromis cinerea</i>	52	<i>Porzana</i>
Pale-vented Bush-hen	<i>Amauromis moluccana</i>	53	treated as conspecific with Bush-hen <i>A. olivaceus</i>
White-breasted Waterhen ^{V,C,CK}	<i>Amauromis phoenicurus</i>	768	
Watercock ^{CV,(CK,V)}	<i>Gallixrex cinerea</i>	711	
Black-tailed Native-hen	<i>Tribonyx ventralis</i>	55	<i>Gallinula</i>
Tasmanian Native-hen	<i>Tribonyx mortierii</i>	54	<i>Gallinula</i>
Dusky Moorhen	<i>Gallinula tenebrosa</i>	56	
Eurasian Coot	<i>Fulica atra</i>	59	
Otididae			
Australian Bustard	<i>Ardeotis australis</i>	176	
CHARADRIIFORMES			
Chionidae			
Black-faced Sheathbill ^H	<i>Chionis minor</i>	767	
Burhinidae			



Bush Stone-curlew	<i>Burhinus grallarius</i>	174	
Beach Stone-curlew	<i>Esacus magnirostris</i>	175	<i>E. neglectus</i>
Haematopodidae			
South Island Pied Oystercatcher ^V	<i>Haematopus finschi</i>	744	not on list
Australian Pied Oystercatcher	<i>Haematopus longirostris</i>	130	Pied Oystercatcher
Sooty Oystercatcher	<i>Haematopus fuliginosus</i>	131	
Recurvirostridae			
Black-winged Stilt	<i>Himantopus himantopus</i>	146	
Red-necked Avocet	<i>Recurvirostra novaehollandiae</i>	148	
Banded Stilt	<i>Cladorhynchus leucocephalus</i>	147	
Charadriidae			
Pacific Golden Plover	<i>Pluvialis fulva</i>	137	
American Golden Plover ^V	<i>Pluvialis dominicus</i>		supplementary list
Grey Plover	<i>Pluvialis squatarola</i>	136	
Ringed Plover ^V	<i>Charadrius hiaticula</i>	895	
Little Ringed Plover ^V	<i>Charadrius dubius</i>	851	
Kentish Plover ^V	<i>Charadrius alexandrinus</i>	770	
Red-capped Plover	<i>Charadrius ruficapillus</i>	143	
Double-banded Plover	<i>Charadrius bicinctus</i>	140	
Lesser Sand Plover	<i>Charadrius mongolus</i>	139	
Greater Sand Plover	<i>Charadrius leschenaultii</i>	141	
Caspian Plover ^{V,CRV}	<i>Charadrius asiaticus</i>	894	
Oriental Plover	<i>Charadrius veredus</i>	142	
Inland Dotterel	<i>Charadrius australis</i>	145	
Black-fronted Dotterel	<i>Elsayornis melanops</i>	144	
Hooded Plover	<i>Thinornis rubricollis</i>	138	
Red-kneed Dotterel	<i>Erythrogonys cinctus</i>	132	
Banded Lapwing	<i>Vanellus tricolor</i>	135	
Masked Lapwing	<i>Vanellus miles</i>	133	
Grey-headed Lapwing ^V	<i>Vanellus cinereus</i>		not on list
Pedionomidae			
Plains-wanderer	<i>Pedionomus torquatus</i>	20	
Jacaniidae			
Comb-crested Jacana	<i>Irediparra gallinacea</i>	171	



Pheasant-tailed Jacana ^V	<i>Hydrophasianus chirurgus</i>	897	not on list
Rostratulidae			
Australian Painted Snipe	<i>Rostratula australis</i>	170	treated as conspecific with Painted Snipe <i>R. benghalensis</i>
Scolopacidae			
Latham's Snipe	<i>Gallinago hardwickii</i>	168	
Pin-tailed Snipe ^{V,C}	<i>Gallinago stenura</i>	852	
Swinhoe's Snipe	<i>Gallinago megala</i>	169	
Black-tailed Godwit	<i>Limosa limosa</i>	152	
Hudsonian Godwit ^V	<i>Limosa haemastica</i>	815	
Bar-tailed Godwit	<i>Limosa lapponica</i>	153	
Little Curlew	<i>Numenius minutus</i>	151	
Whimbrel	<i>Numenius phaeopus</i>	150	
Eastern Curlew	<i>Numenius madagascariensis</i>	149	
Upland Sandpiper ^V	<i>Bartramia longicauda</i>	892	
Terek Sandpiper	<i>Xenus cinereus</i>	160	
Common Sandpiper	<i>Actitis hypoleucos</i>	157	
Green Sandpiper ^V	<i>Tringa ochropus</i>	832	supplementary list
Grey-tailed Tattler	<i>Tringa brevipes</i>	155	<i>Heteroscelus</i>
Wandering Tattler	<i>Tringa incana</i>	156	<i>Heteroscelus</i>
Spotted Redshank ^V	<i>Tringa erythropus</i>	820	
Nordmann's Greenshank ^V	<i>Tringa guttifer</i>		supplementary list
Common Greenshank	<i>Tringa nebularia</i>	158	
Lesser Yellowlegs ^V	<i>Tringa flavipes</i>	809	
Marsh Sandpiper	<i>Tringa stagnatilis</i>	159	
Common Redshank	<i>Tringa totanus</i>	891	
Wood Sandpiper	<i>Tringa glareola</i>	154	
Ruddy Turnstone	<i>Arenaria interpres</i>	129	
Asian Dowitcher	<i>Limnodromus semipalmatus</i>	939	
Short-billed Dowitcher ^V	<i>Limnodromus griseus</i>	764	not on list
Great Knot	<i>Calidris tenuirostris</i>	165	
Red Knot	<i>Calidris canutus</i>	164	
Sanderling	<i>Calidris alba</i>	166	
Little Stint	<i>Calidris minuta</i>	857	
Red-necked Stint	<i>Calidris ruficollis</i>	162	



Long-toed Stint	<i>Calidris subminuta</i>	965	
White-rumped Sandpiper	<i>Calidris fuscicollis</i>	849	
Baird's Sandpiper	<i>Calidris bairdii</i>	890	
Pectoral Sandpiper	<i>Calidris melanotos</i>	978	
Sharp-tailed Sandpiper	<i>Calidris acuminata</i>	163	
Dunlin	<i>Calidris alpina</i>	888	
Curllew Sandpiper	<i>Calidris ferruginea</i>	161	
Stilt Sandpiper	<i>Calidris himantopus</i>	827	<i>Micropalama</i>
Buff-breasted Sandpiper	<i>Tryngites subruficollis</i>	887	
Broad-billed Sandpiper	<i>Limicola falcinellus</i>	167	
Ruff	<i>Philomachus pugnax</i>	934	
Wilson's Phalarope	<i>Steganopus tricolor</i>	886	
Red-necked Phalarope	<i>Phalaropus lobatus</i>	932	
Grey Phalarope	<i>Phalaropus fulicarius</i>	835	<i>P. fulicari a</i>
Turnicidae			formerly included in Turniciformes
Red-backed Button-quail	<i>Turnix maculosus</i>	13	<i>T. maculos a</i>
Black-breasted Button-quail	<i>Turnix melanogaster</i>	17	
Chestnut-backed Button-quail	<i>Turnix castanotus</i>	15	<i>T. castanot a</i>
Buff-breasted Button-quail	<i>Turnix olivii</i>	16	
Painted Button-quail	<i>Turnix varius</i>	14	<i>T. vari a</i>
Red-chested Button-quail	<i>Turnix pyrrhothorax</i>	19	
Little Button-quail	<i>Turnix velox</i>	18	
Glareolidae			
Oriental Pratincole	<i>Glareola maldivarum</i>	172	
Australian Pratincole	<i>Stiltia isabella</i>	173	
Stercorariidae			new family; split from Laridae
South Polar Skua	<i>Stercorarius maccormicki</i>	979	<i>Catharacta</i>
Brown Skua	<i>Stercorarius antarcticus</i>	980	treated as conspecific with Great Skua <i>Catharacta skua</i>
Pomarine Jaeger	<i>Stercorarius pomarinus</i>	945	
Arctic Jaeger	<i>Stercorarius parasiticus</i>	128	
Long-tailed Jaeger	<i>Stercorarius longicaudus</i>	933	
Laridae			
Common Noddy	<i>Anous stolidus</i>	122	
Black Noddy	<i>Anous minutus</i>	124	



Lesser Noddy	<i>Anous tenuirostris</i>	123	
White Tern ^{V,LCR,N}	<i>Gygis alba</i>	972	
Grey Ternlet ^{V,LAN}	<i>Procelsterna cerulea</i>	982	
Bridled Tern	<i>Onychoprion anaethetus</i>	121	<i>Sterna</i>
Sooty Tern	<i>Onychoprion fuscata</i>	120	<i>Sterna</i>
Little Tern	<i>Sternula albifrons</i>	117	<i>Sterna</i>
Fairy Tern	<i>Sternula nereis</i>	118	<i>Sterna</i>
Gull-billed Tern	<i>Gelochelidon nilotica</i>	111	<i>Sterna</i>
Caspian Tern	<i>Hydroprogne caspia</i>	112	<i>Sterna</i>
Whiskered Tern	<i>Chlidonias hybrida</i>	110	
White-winged Black Tern	<i>Chlidonias leucopterus</i>	109	
Black Tern ^V	<i>Chlidonias niger</i>	884	
Roseate Tern	<i>Sterna dougallii</i>	113	
White-fronted Tern	<i>Sterna striata</i>	114	
Black-naped Tern	<i>Sterna sumatrana</i>	119	
Common Tern	<i>Sterna hirundo</i>	953	
Arctic Tern	<i>Sterna paradisaea</i>	952	
Antarctic Tern ^{V,MH}	<i>Sterna vittata</i>	985	
Lesser Crested Tern	<i>Thalasseus bengalensis</i>	116	<i>Sterna</i>
Crested Tern	<i>Thalasseus bergii</i>	115	<i>Sterna</i>
Pacific Gull	<i>Larus pacificus</i>	126	
Lesser Black-backed Gull ^{CKV}	<i>Larus fuscus</i>	855	supplementary list
Kelp Gull	<i>Larus dominicanus</i>	981	
Mew Gull ^{CV}	<i>Larus canus</i>	786	not on list
Black-tailed Gull ^V	<i>Larus crassirostris</i>	856	
Laughing Gull ^V	<i>Leucophaeus atricilla</i>	785	<i>Larus</i>
Franklin's Gull ^V	<i>Leucophaeus pipixcan</i>	885	<i>Larus</i>
Silver Gull	<i>Chroicocephalus novaehollandiae</i>	125	<i>Larus</i>
Black-headed Gull ^{CV}	<i>Chroicocephalus ridibundus</i>	784	<i>Larus</i>
Sabine's Gull ^V	<i>Xema sabini</i>	783	<i>Larus</i>
PSITTACIFORMES			
Nestoridae			new family; split from Psittacidae
Norfolk Island Kaka ^{NE}	<i>Nestor productus</i>	742	
Cacatuidae			



Palm Cockatoo	<i>Probosciger aterrimus</i>	263	
Red-tailed Black-Cockatoo	<i>Calyptorhynchus banksii</i>	264	
Glossy Black-Cockatoo	<i>Calyptorhynchus lathami</i>	265	
Yellow-tailed Black-Cockatoo	<i>Calyptorhynchus funereus</i>	267	
Carnaby's Black-Cockatoo	<i>Calyptorhynchus latirostris</i>	794	Short-billed Black-Cockatoo
Baudin's Black-Cockatoo	<i>Calyptorhynchus baudinii</i>	266	Long-billed Black-Cockatoo
Gang-gang Cockatoo	<i>Callocephalon fimbriatum</i>	268	
Major Mitchell's Cockatoo	<i>Lophochroa leadbeateri</i>	270	<i>Cacatua</i>
Galah	<i>Eolophus roseicapillus</i>	273	<i>Cacatua roseicapilla</i>
Long-billed Corella	<i>Cacatua tenuirostris</i>	272	
Western Corella	<i>Cacatua pastinator</i>	795	
Little Corella	<i>Cacatua sanguinea</i>	271	
Sulphur-crested Cockatoo	<i>Cacatua galerita</i>	269	
Cockatiel	<i>Nymphicus hollandicus</i>	274	
Psittacidae			
Rainbow Lorikeet	<i>Trichoglossus haematodus</i>	254	
Scaly-breasted Lorikeet	<i>Trichoglossus chlorolepidotus</i>	256	
Varied Lorikeet	<i>Psitteuteles versicolor</i>	257	
Musk Lorikeet	<i>Glossopsitta concinna</i>	258	
Little Lorikeet	<i>Glossopsitta pusilla</i>	260	
Purple-crowned Lorikeet	<i>Glossopsitta porphyrocephala</i>	259	
Double-eyed Fig-Parrot	<i>Cyclopsitta diophthalma</i>	261	
Eclectus Parrot	<i>Eclectus roratus</i>	275	
Red-cheeked Parrot	<i>Geoffroyus geoffroyi</i>	276	
Australian King-Parrot	<i>Alisterus scapularis</i>	281	
Red-winged Parrot	<i>Aprosmictus erythropterus</i>	280	
Superb Parrot	<i>Polytelis swainsonii</i>	277	
Regent Parrot	<i>Polytelis anthopeplus</i>	278	
Princess Parrot	<i>Polytelis alexandrae</i>	279	
Green Rosella	<i>Platycercus caledonicus</i>	285	
Crimson Rosella	<i>Platycercus elegans</i>	282	
Eastern Rosella	<i>Platycercus eximius</i>	288	
Pale-headed Rosella	<i>Platycercus adscitus</i>	286	
Northern Rosella	<i>Platycercus venustus</i>	287	



Western Rosella	<i>Platycercus icterotis</i>	289	
Australian Ringneck	<i>Barnardius zonarius</i>	294	
Red-capped Parrot	<i>Purpureicephalus spurius</i>	290	
Blue Bonnet	<i>Northiella haematogaster</i>	297	
Swift Parrot	<i>Lathamus discolor</i>	309	
Red-rumped Parrot	<i>Psephotus haematonotus</i>	295	
Mulga Parrot	<i>Psephotus varius</i>	296	
Golden-shouldered Parrot	<i>Psephotus chrysopterygius</i>	300	
Hooded Parrot	<i>Psephotus dissimilis</i>	301	
Paradise Parrot ^F	<i>Psephotus pulcherrimus</i>	299	
Tasman Parakeet ^{CHEN}	<i>Cyanoramphus cookii</i>		treated as conspecific with Red-crowned Parakeet <i>C. novaezelandiae</i>
Red-fronted Parakeet ^{WE}	<i>Cyanoramphus novaezelandiae</i>	808	Red-crowned Parakeet
Budgerigar	<i>Melopsittacus undulatus</i>	310	
Bourke's Parrot	<i>Neopsephotus bourkii</i>	304	
Blue-winged Parrot	<i>Neophema chrysostoma</i>	306	
Elegant Parrot	<i>Neophema elegans</i>	307	
Rock Parrot	<i>Neophema petrophila</i>	308	
Orange-bellied Parrot	<i>Neophema chrysogaster</i>	305	
Turquoise Parrot	<i>Neophema pulchella</i>	302	
Scarlet-chested Parrot	<i>Neophema splendida</i>	303	
Ground Parrot	<i>Pezoporus wallicus</i>	311	
Night Parrot	<i>Pezoporus occidentalis</i>	312	
CUCULIFORMES			
Cuculidae			
Lesser Coucal ^{AV}	<i>Centropus bengalensis</i>		not on list
Pheasant Coucal	<i>Centropus phasianinus</i>	349	added to family (formerly included in Centropodidae)
Asian Koel ^{CV}	<i>Eudynamys scolopacea</i>		treated as conspecific with Common Koel <i>E. scolopacea</i>
Eastern Koel	<i>Eudynamys orientalis</i>	347	treated as conspecific with Common Koel <i>E. scolopacea</i>
Long-tailed Cuckoo ^{LHN}	<i>Urodynamys taitensis</i>	791	<i>Eudynamis</i>
Channel-billed Cuckoo	<i>Scythrops novaehollandiae</i>	348	
Horsfield's Bronze-Cuckoo	<i>Chalcites basalís</i>	342	<i>Chrysococcyx</i>
Black-eared Cuckoo	<i>Chalcites osculans</i>	341	<i>Chrysococcyx</i>
Shining Bronze-Cuckoo	<i>Chalcites lucidus</i>	344	<i>Chrysococcyx</i>
Little Bronze-Cuckoo	<i>Chalcites minutillus</i>	345	Gould's Bronze-Cuckoo <i>Chrysococcyx minutillus russatus</i> treated as separate species



Pallid Cuckoo	<i>Cacomantis pallidus</i>	337	<i>Cuculus</i>
Chestnut-breasted Cuckoo	<i>Cacomantis castaneiventris</i>	340	
Fan-tailed Cuckoo	<i>Cacomantis flabelliformis</i>	338	
Brush Cuckoo	<i>Cacomantis variolosus</i>	339	
Oriental Cuckoo	<i>Cuculus optatus</i>	336	treated as conspecific with Oriental Cuckoo <i>C. stauratus</i>
Large Hawk-Cuckoo ^{CV}	<i>Hierococcyx sparverioides</i>		not on list
STRIGIFORMES			
Strigidae			
Powerful Owl	<i>Ninox strenua</i>	248	
Rufous Owl	<i>Ninox rufa</i>	247	
Barking Owl	<i>Ninox connivens</i>	246	
Southern Boobook	<i>Ninox novaeseelandiae</i>	242	
Brown Hawk-Owl ^{AV}	<i>Ninox scutulata</i>	823	
Christmas Island Hawk-Owl ^C	<i>Ninox natalis</i>	807	treated as conspecific with Moluccan Hawk-Owl <i>N. squamipila</i>
Buffy Fish-Owl ^{CK}	<i>Bubo ketupu</i>	747	supplementary list
Tytonidae			
Sooty Owl	<i>Tyto tenebricosa</i>	253	Lesser Sooty Owl <i>T.t. multipunctata</i> treated as separate species
Masked Owl	<i>Tyto novaehollandiae</i>	250	
Eastern Barn Owl	<i>Tyto javanica</i>	249	treated as conspecific with Barn Owl <i>T. alba</i>
Eastern Grass Owl	<i>Tyto longimembris</i>	252	treated as conspecific with Grass Owl <i>T. capensis</i>
CORACIIFORMES			
Alcedinidae			
Common Kingfisher ^{CV}	<i>Alcedo atthis</i>	753	not on list
Azure Kingfisher	<i>Ceyx azureus</i>	319	<i>Alcedo azure a</i>
Little Kingfisher	<i>Ceyx pusilla</i>	320	<i>Alcedo</i>
Halcyonidae			
Buff-breasted Paradise-Kingfisher	<i>Tanysiptera sylvia</i>	328	
Laughing Kookaburra	<i>Dacelo novaeguineae</i>	322	
Blue-winged Kookaburra	<i>Dacelo leachii</i>	323	
Yellow-billed Kingfisher	<i>Syma torotoro</i>	321	
Forest Kingfisher	<i>Todiramphus macleayii</i>	324	
Red-backed Kingfisher	<i>Todiramphus pyrrhopygius</i>	325	<i>T. pyrrhopygi a</i>
Sacred Kingfisher	<i>Todiramphus sanctus</i>	326	
Collared Kingfisher	<i>Todiramphus chloris</i>	327	



Black-capped Kingfisher ^V	<i>Halcyon pileata</i>		not on list
Meropidae			
Rainbow Bee-eater	<i>Merops ornatus</i>	329	
Coraciidae			
Dollarbird	<i>Eurystomus orientalis</i>	318	
PASSERIFORMES			
Pittidae			
Red-bellied Pitta	<i>Pitta erythrogaster</i>	353	
Blue-winged Pitta ^{V,CV}	<i>Pitta moluccensis</i>	880	
Noisy Pitta	<i>Pitta versicolor</i>	352	
Rainbow Pitta	<i>Pitta iris</i>	354	
Menuridae			
Albert's Lyrebird	<i>Menura alberti</i>	351	
Superb Lyrebird	<i>Menura novaehollandiae</i>	350	
Atrichornithidae			
Rufous Scrub-bird	<i>Atrichornis rufescens</i>	355	
Noisy Scrub-bird	<i>Atrichornis clamosus</i>	356	
Climacteridae			
White-throated Treecreeper	<i>Cormobates leucophaea</i>	558	<i>C. leucophaea</i> ^{us}
White-browed Treecreeper	<i>Climacteris affinis</i>	561	
Red-browed Treecreeper	<i>Climacteris erythroptis</i>	560	
Brown Treecreeper	<i>Climacteris picumnus</i>	555	
Black-tailed Treecreeper	<i>Climacteris melanura</i>	562	
Rufous Treecreeper	<i>Climacteris rufa</i>	556	
Ptilonorhynchidae			
Spotted Catbird	<i>Ailuroedus melanotis</i>	677	
Green Catbird	<i>Ailuroedus crassirostris</i>	676	
Tooth-billed Bowerbird	<i>Scenopoeetes dentirostris</i>	678	
Golden Bowerbird	<i>Amblyornis newtonianus</i>	685	<i>Pronodura newtoniana</i>
Regent Bowerbird	<i>Sericulus chrysocephalus</i>	684	
Satin Bowerbird	<i>Ptilonorhynchus violaceus</i>	679	
Spotted Bowerbird	<i>Ptilonorhynchus maculatus</i>	680	<i>Chlamydera maculata</i>
Western Bowerbird	<i>Ptilonorhynchus guttatus</i>	681	<i>Chlamydera guttata</i>
Great Bowerbird	<i>Ptilonorhynchus nuchalis</i>	683	<i>Chlamydera</i>



Fawn-breasted Bowerbird	<i>Ptilonorhynchus cerviniventris</i>	682	
Maluridae			
Superb Fairy-wren	<i>Malurus cyaneus</i>	529	
Splendid Fairy-wren	<i>Malurus splendens</i>	532	
Purple-crowned Fairy-wren	<i>Malurus coronatus</i>	542	
Red-backed Fairy-wren	<i>Malurus melanocephalus</i>	541	
White-winged Fairy-wren	<i>Malurus leucopterus</i>	535	
Variiegated Fairy-wren	<i>Malurus lamberti</i>	536	
Lovely Fairy-wren	<i>Malurus amabilis</i>	539	
Blue-breasted Fairy-wren	<i>Malurus pulcherrimus</i>	540	
Red-winged Fairy-wren	<i>Malurus elegans</i>	538	
Southern Emu-wren	<i>Stipiturus malachurus</i>	526	
Mallee Emu-wren	<i>Stipiturus mallee</i>	527	
Rufous-crowned Emu-wren	<i>Stipiturus ruficeps</i>	528	
Grey Grasswren	<i>Amytornis barbatus</i>	871	
Striated Grasswren	<i>Amytornis striatus</i>	513	
Short-tailed Grasswren	<i>Amytornis merrotsyi</i>	735	treated as conspecific with Striated Grasswren <i>A. striatus</i>
White-throated Grasswren	<i>Amytornis woodwardi</i>	516	
Carpentarian Grasswren	<i>Amytornis dorotheae</i>	517	
Thick-billed Grasswren	<i>Amytornis textilis</i>	512	
Dusky Grasswren	<i>Amytornis pumelli</i>	511	
Kalkadoon Grasswren	<i>Amytornis ballarae</i>	708	treated as conspecific with Dusky Grasswren <i>A. pumelli</i>
Eyrean Grasswren	<i>Amytornis goyderi</i>	515	
Black Grasswren	<i>Amytornis housei</i>	518	
Dasyornithidae			new family; split from Pardalotidae
Eastern Bristlebird	<i>Dasyornis brachypterus</i>	519	
Western Bristlebird	<i>Dasyornis longirostris</i>	520	
Rufous Bristlebird	<i>Dasyornis broadbenti</i>	521	
Acanthizidae			new family; split from Pardalotidae
Pilotbird	<i>Pycnoptilus floccosus</i>	506	
Rockwarbler	<i>Origma solitaria</i>	505	
Fernwren	<i>Oreoscopus gutturalis</i>	496	
Yellow-throated Scrubwren	<i>Sericornis citreogularis</i>	493	
White-browed Scrubwren	<i>Sericornis frontalis</i>	488	



Tasmanian Scrubwren	<i>Sericornis humilis</i>	495	
Atherton Scrubwren	<i>Sericornis kerri</i>	946	
Large-billed Scrubwren	<i>Sericornis magnirostra</i>	494	<i>S. magnirostris</i>
Tropical Scrubwren	<i>Sericornis beccarii</i>		
Scrubtit	<i>Acanthornis magna</i>	487	<i>A. magnus</i>
Chestnut-rumped Heathwren	<i>Hylacola pyrrhopygia</i>	498	
Shy Heathwren	<i>Hylacola cauta</i>	499	
Striated Fieldwren	<i>Calamanthus fuliginosus</i>	500	
Rufous Fieldwren	<i>Calamanthus campestris</i>	502	
Redthroat	<i>Pyrrholaemus brunneus</i>	497	
Speckled Warbler	<i>Chthonicola sagittata</i>	504	
Weebill	<i>Smicromis brevirostris</i>	465	
Brown Gerygone	<i>Gerygone mouki</i>	454	
Norfolk Island Gerygone ^N	<i>Gerygone modesta</i>	958	
Lord Howe Gerygone ^{L^HE}	<i>Gerygone insularis</i>	8215	
Mangrove Gerygone	<i>Gerygone levigaster</i>	460	
Western Gerygone	<i>Gerygone fusca</i>	463	
Dusky Gerygone	<i>Gerygone tenebrosa</i>	461	
Large-billed Gerygone	<i>Gerygone magnirostris</i>	457	
Green-backed Gerygone	<i>Gerygone chloronota</i>	458	<i>G. chloronotus</i>
Fairy Gerygone	<i>Gerygone palpebrosa</i>	456	
White-throated Gerygone	<i>Gerygone albogularis</i>	453	<i>G. olivacea</i>
Slaty-backed Thornbill	<i>Acanthiza robustirostris</i>	480	
Striated Thornbill	<i>Acanthiza lineata</i>	470	
Yellow Thornbill	<i>Acanthiza nana</i>	471	
Yellow-rumped Thornbill	<i>Acanthiza chrysorrhoa</i>	486	
Chestnut-rumped Thornbill	<i>Acanthiza uropygialis</i>	481	
Buff-rumped Thornbill	<i>Acanthiza reguloides</i>	484	
Western Thornbill	<i>Acanthiza inornata</i>	472	
Slender-billed Thornbill	<i>Acanthiza iredalei</i>	482	
Tasmanian Thornbill	<i>Acanthiza ewingii</i>	473	
Inland Thornbill	<i>Acanthiza apicalis</i>	476	
Brown Thornbill	<i>Acanthiza pusilla</i>	475	
Mountain Thornbill	<i>Acanthiza katherina</i>	474	



Southern Whiteface	<i>Aphelocephala leucopsis</i>	466	
Chestnut-breasted Whiteface	<i>Aphelocephala pectoralis</i>	468	
Banded Whiteface	<i>Aphelocephala nigricincta</i>	469	
Pardalotidae			
Spotted Pardalote	<i>Pardalotus punctatus</i>	565	
Forty-spotted Pardalote	<i>Pardalotus quadragintus</i>	571	
Red-browed Pardalote	<i>Pardalotus rubricatus</i>	570	
Striated Pardalote	<i>Pardalotus striatus</i>	976	
Meliphagidae			
Eastern Spinebill	<i>Acanthorhynchus tenuirostris</i>	591	
Western Spinebill	<i>Acanthorhynchus superciliosus</i>	592	
Pied Honeyeater	<i>Certhionyx variegatus</i>	602	
Lewin's Honeyeater	<i>Meliphaga lewinii</i>	605	
Yellow-spotted Honeyeater	<i>Meliphaga notata</i>	606	
Graceful Honeyeater	<i>Meliphaga gracilis</i>	612	
White-lined Honeyeater	<i>Meliphaga albilineata</i>	607	
Kimberley Honeyeater	<i>Meliphaga fordiana</i>	8293	treated as conspecific with White-lined Honeyeater <i>M. albilineata</i>
Bridled Honeyeater	<i>Lichenostomus frenatus</i>	611	
Eungella Honeyeater	<i>Lichenostomus hindwoodi</i>	834	
Yellow-faced Honeyeater	<i>Lichenostomus chrysops</i>	614	
Singing Honeyeater	<i>Lichenostomus virescens</i>	608	
Varied Honeyeater	<i>Lichenostomus versicolor</i>	609	
Mangrove Honeyeater	<i>Lichenostomus fasciocularis</i>	610	
White-gaped Honeyeater	<i>Lichenostomus unicolor</i>	628	
Yellow Honeyeater	<i>Lichenostomus flavus</i>	626	
White-eared Honeyeater	<i>Lichenostomus leucotis</i>	617	
Yellow-throated Honeyeater	<i>Lichenostomus flavicollis</i>	616	
Yellow-tufted Honeyeater	<i>Lichenostomus melanops</i>	619	
Purple-gaped Honeyeater	<i>Lichenostomus cratitius</i>	620	
Grey-headed Honeyeater	<i>Lichenostomus keartlandi</i>	621	
Yellow-plumed Honeyeater	<i>Lichenostomus ornatus</i>	622	
Grey-fronted Honeyeater	<i>Lichenostomus plumulus</i>	623	
Fuscous Honeyeater	<i>Lichenostomus fuscus</i>	613	
Yellow-tinted Honeyeater	<i>Lichenostomus flavescens</i>	624	



White-plumed Honeyeater	<i>Lichenostomus penicillatus</i>	625	
White-fronted Honeyeater	<i>Pumella albigrons</i>	594	<i>Phylidonyris</i>
Bell Miner	<i>Manorina melanophrys</i>	633	
Noisy Miner	<i>Manorina melanocephala</i>	634	
Black-eared Miner	<i>Manorina melanotis</i>	967	
Yellow-throated Miner	<i>Manorina flavigula</i>	635	
Spiny-cheeked Honeyeater	<i>Acanthagenys rufogularis</i>	640	
Western Wattlebird	<i>Anthochaera lunulata</i>	710	treated as conspecific with Little Wattlebird A. <i>chrysoptera</i>
Little Wattlebird	<i>Anthochaera chrysoptera</i>	712	
Regent Honeyeater	<i>Anthochaera phrygia</i>	603	<i>Xanthomyza</i>
Red Wattlebird	<i>Anthochaera carunculata</i>	638	
Yellow Wattlebird	<i>Anthochaera paradoxa</i>	639	
Brown-backed Honeyeater	<i>Ramsayornis modestus</i>	595	
Bar-breasted Honeyeater	<i>Ramsayornis fasciatus</i>	596	
Rufous-banded Honeyeater	<i>Conopophila albogularis</i>	600	
Rufous-throated Honeyeater	<i>Conopophila rufogularis</i>	601	
Grey Honeyeater	<i>Conopophila whitei</i>	599	
Crimson Chat	<i>Epthianura tricolor</i>	449	
Orange Chat	<i>Epthianura aurifrons</i>	450	
Yellow Chat	<i>Epthianura crocea</i>	451	
White-fronted Chat	<i>Epthianura albifrons</i>	448	
Gibberbird	<i>Ashbyia lovensis</i>	452	
Black Honeyeater	<i>Sugomel niger</i>	589	<i>Certhionyx</i>
Dusky Honeyeater	<i>Myzomela obscura</i>	590	
Red-headed Honeyeater	<i>Myzomela erythrocephala</i>	587	
Scarlet Honeyeater	<i>Myzomela sanguinolenta</i>	586	
Green-backed Honeyeater	<i>Glycichaera fallax</i>	604	
Tawny-crowned Honeyeater	<i>Glyciphila melanops</i>	593	<i>Phylidonyris</i>
Banded Honeyeater	<i>Cissomela pectoralis</i>	588	<i>Certhionyx</i>
Brown Honeyeater	<i>Lichmera indistincta</i>	597	
Crescent Honeyeater	<i>Phylidonyris pyrrhopterus</i>	630	<i>P. pyrrhoptera</i>
New Holland Honeyeater	<i>Phylidonyris novaehollandiae</i>	631	
White-cheeked Honeyeater	<i>Phylidonyris niger</i>	632	<i>P. nigra</i>
White-streaked Honeyeater	<i>Trichodere cockerelli</i>	627	



Black-chinned Honeyeater	<i>Melithreptus gularis</i>	580	
Strong-billed Honeyeater	<i>Melithreptus validirostris</i>	582	
Brown-headed Honeyeater	<i>Melithreptus brevirostris</i>	583	
White-throated Honeyeater	<i>Melithreptus albogularis</i>	579	
White-naped Honeyeater	<i>Melithreptus lunatus</i>	578	
Black-headed Honeyeater	<i>Melithreptus affinis</i>	584	
Blue-faced Honeyeater	<i>Entomyzon cyanotis</i>	641	
Helmeted Friarbird	<i>Philemon buceroides</i>	642	
Silver-crowned Friarbird	<i>Philemon argenteiceps</i>	644	
Noisy Friarbird	<i>Philemon comiculatus</i>	645	
Little Friarbird	<i>Philemon citreogularis</i>	646	
Macleay's Honeyeater	<i>Xanthotis macleayanus</i>	615	<i>X. macleayana</i>
Tawny-breasted Honeyeater	<i>Xanthotis flaviventer</i>	629	
Striped Honeyeater	<i>Plectorhyncha lanceolata</i>	585	
Painted Honeyeater	<i>Grantiella picta</i>	598	
Pomatostomidae			
Grey-crowned Babbler	<i>Pomatostomus temporalis</i>	443	
Hall's Babbler	<i>Pomatostomus halli</i>	938	
White-browed Babbler	<i>Pomatostomus superciliosus</i>	445	
Chestnut-crowned Babbler	<i>Pomatostomus ruficeps</i>	446	
Orthonychidae			
Australian Logrunner	<i>Orthonyx temminckii</i>	434	Logrunner
Chowchilla	<i>Orthonyx spaldingii</i>	435	
Eupetidae			
different family; formerly Cinclosomatidae			
Spotted Quail-thrush	<i>Cinclosoma punctatum</i>	436	
Chestnut Quail-thrush	<i>Cinclosoma castanotum</i>	437	<i>C. castanotus</i>
Cinnamon Quail-thrush	<i>Cinclosoma cinnamomeum</i>	439	
Chestnut-breasted Quail-thrush	<i>Cinclosoma castaneothorax</i>	438	
Eastern Whipbird	<i>Psophodes olivaceus</i>	421	
Western Whipbird	<i>Psophodes nigrogularis</i>	422	
Chirruping Wedgebill	<i>Psophodes cristatus</i>	866	
Chiming Wedgebill	<i>Psophodes occidentalis</i>	865	
Neosittidae			
Varied Sittella	<i>Daphoenositta chrysoptera</i>	549	



Campephagidae			
Ground Cuckoo-shrike	<i>Coracina maxima</i>	423	
Black-faced Cuckoo-shrike	<i>Coracina novaehollandiae</i>	424	
White-bellied Cuckoo-shrike	<i>Coracina papuensis</i>	425	
Barred Cuckoo-shrike	<i>Coracina lineata</i>	428	
Cicadabird	<i>Coracina tenuirostris</i>	429	
White-winged Triller	<i>Lalage sueurii</i>	430	
Varied Triller	<i>Lalage leucomela</i>	431	
Long-tailed Triller ^{NE}	<i>Lalage leucopyga</i>	962	
Pachycephalidae			
Crested Shrike-tit	<i>Falcunculus frontatus</i>	416	
Olive Whistler	<i>Pachycephala olivacea</i>	405	
Red-lored Whistler	<i>Pachycephala rufogularis</i>	402	
Gilbert's Whistler	<i>Pachycephala inornata</i>	403	
Golden Whistler	<i>Pachycephala pectoralis</i>	398	
Mangrove Golden Whistler	<i>Pachycephala melanura</i>	400	
Grey Whistler	<i>Pachycephala simplex</i>	406	
Rufous Whistler	<i>Pachycephala rufiventris</i>	401	
White-breasted Whistler	<i>Pachycephala lanioides</i>	404	
Little Shrike-thrush	<i>Colluricincla megarhyncha</i>	413	
Bower's Shrike-thrush	<i>Colluricincla boweri</i>	414	
Sandstone Shrike-thrush	<i>Colluricincla woodwardi</i>	411	
Grey Shrike-thrush	<i>Colluricincla harmonica</i>	408	
Crested Bellbird	<i>Oreoica gutturalis</i>	419	
Oriolidae			
Australasian Figbird	<i>Sphecotheres vieilloti</i>	432	treated as conspecific with Figbird <i>S. virdis</i>
Yellow Oriole	<i>Oriolus flavocinctus</i>	672	
Olive-backed Oriole	<i>Oriolus sagittatus</i>	671	
Artamidae			
White-breasted Woodswallow	<i>Artamus leucorhynchus</i>	543	
Masked Woodswallow	<i>Artamus personatus</i>	544	
White-browed Woodswallow	<i>Artamus superciliosus</i>	545	
Black-faced Woodswallow	<i>Artamus cinereus</i>	546	
Dusky Woodswallow	<i>Artamus cyanopterus</i>	547	



Little Woodswallow	<i>Artamus minor</i>	548	
Black Butcherbird	<i>Cracticus quoyi</i>	701	
Grey Butcherbird	<i>Cracticus torquatus</i>	702	
Black-backed Butcherbird	<i>Cracticus mentalis</i>	704	
Pied Butcherbird	<i>Cracticus nigrogularis</i>	700	
Australian Magpie	<i>Cracticus tibicen</i>	705	<i>Gymnorhina</i>
Pied Currawong	<i>Strepera graculina</i>	694	
Black Currawong	<i>Strepera fuliginosa</i>	696	
Grey Currawong	<i>Strepera versicolor</i>	697	
Dicruridae			
Spangled Drongo	<i>Dicrurus bracteatus</i>	673	
Rhipiduridae			new family; split from Dicruridae
Rufous Fantail	<i>Rhipidura rufifrons</i>	362	
Arafura Fantail	<i>Rhipidura dryas</i>	718	treated as conspecific with Rufous Fantail <i>R. rufifrons</i>
New Zealand Fantail ^{LNE}	<i>Rhipidura fuliginosa</i>	719	treated as conspecific with Grey Fantail <i>R. fuliginosa</i>
Grey Fantail	<i>Rhipidura albiscapa</i>	361	treated as conspecific with Grey Fantail <i>R. fuliginosa</i>
Mangrove Grey Fantail	<i>Rhipidura phasiana</i>	826	
Northern Fantail	<i>Rhipidura rufiventris</i>	363	
Willie Wagtail	<i>Rhipidura leucophrys</i>	364	
Laniidae			family added to Australian list
Brown Shrike ^{CV}	<i>Lanius cristatus</i>	734	supplementary list
Tiger Shrike ^V	<i>Lanius tigrinus</i>		not on list
Corvidae			
Black-billed Magpie ^V	<i>Pica pica</i>		not on list
Australian Raven	<i>Corvus coronoides</i>	930	
Forest Raven	<i>Corvus tasmanicus</i>	868	
Little Raven	<i>Corvus mellori</i>	954	
Little Crow	<i>Corvus bennetti</i>	691	
Torresian Crow	<i>Corvus orru</i>	692	
House Crow	<i>Corvus splendens</i>	867	supplementary list
Monarchidae			new family; split from Dicruridae
Broad-billed Flycatcher	<i>Myiagra ruficollis</i>	367	
Leaden Flycatcher	<i>Myiagra rubecula</i>	365	
Satin Flycatcher	<i>Myiagra cyanoleuca</i>	366	



Shining Flycatcher	<i>Myiagra alecto</i>	372	
Restless Flycatcher	<i>Myiagra inquieta</i>	728	
White-eared Monarch	<i>Cartemornis leucotis</i>	376	<i>Monarcha</i>
Black-faced Monarch	<i>Monarcha melanopsis</i>	373	
Black-winged Monarch	<i>Monarcha frater</i>	374	
Island Monarch ^{AV}	<i>Monarcha cinerascens</i>		not on list
Spectacled Monarch	<i>Symposiarchus trivirgatus</i>	375	<i>Monarcha</i>
Magpie-lark	<i>Grallina cyanoleuca</i>	415	
Friiled Monarch	<i>Arses telescopthalmus</i>	371	
Pied Monarch	<i>Arses kaupi</i>	370	
Yellow-breasted Boatbill	<i>Machaerirhynchus flaviventer</i>	368	
Corcoracidae			
White-winged Chough	<i>Corcorax melanorhamphos</i>	693	
Apostlebird	<i>Struthidea cinerea</i>	675	
Paradisaeidae			
Trumpet Manucode	<i>Phonygamus keraudrenii</i>	689	<i>Manucodia</i>
Paradise Riflebird	<i>Ptiloris paradiseus</i>	686	
Victoria's Riflebird	<i>Ptiloris victoriae</i>	687	
Magnificent Riflebird	<i>Ptiloris magnificus</i>	688	
Petroicidae			
Jacky Winter	<i>Microeca fascinans</i>	377	
Lemon-bellied Flycatcher	<i>Microeca flavigaster</i>	379	
Yellow-legged Flycatcher	<i>Microeca griseocephala</i>	395	
Pacific Robin	<i>Petroica multicolor</i>	714	treated as conspecific with <i>Scarlet Robin P. multicolor</i>
Scarlet Robin	<i>Petroica boodang</i>	380	treated as conspecific with <i>Scarlet Robin P. multicolor</i>
Red-capped Robin	<i>Petroica goodenovii</i>	381	
Flame Robin	<i>Petroica phoenicea</i>	382	
Rose Robin	<i>Petroica rosea</i>	384	
Pink Robin	<i>Petroica rodinogaster</i>	383	
Hooded Robin	<i>Melanodryas cucullata</i>	385	
Dusky Robin	<i>Melanodryas vittata</i>	386	
Pale-yellow Robin	<i>Tregellasia capito</i>	396	
White-faced Robin	<i>Tregellasia leucops</i>	397	
Eastern Yellow Robin	<i>Eopsaltria australis</i>	392	



Western Yellow Robin	<i>Eopsaltria griseogularis</i>	394	
White-breasted Robin	<i>Eopsaltria georgiana</i>	387	
Mangrove Robin	<i>Peneonanthe pulverulenta</i>	388	<i>Eopsaltria</i>
Grey-headed Robin	<i>Heteromyias cinereifrons</i>	389	treated as conspecific with Grey-headed Robin <i>H. albispecularis</i>
White-browed Robin	<i>Poecilodryas superciliosa</i>	390	
Buff-sided Robin	<i>Poecilodryas cerviniventris</i>	391	treated as conspecific with White-browed Robin <i>P. superciliosa</i>
Northern Scrub-robin	<i>Drymodes superciliaris</i>	442	
Southern Scrub-robin	<i>Drymodes brunneopygia</i>	441	
Alaudidae			
Horsfield's Bushlark	<i>Mirafra javanica</i>	648	Singing Bushlark
Eurasian Skylark ^I	<i>Alauda arvensis</i>	993	Skylark
Cisticolidae			new family; formerly included in Sylviidae
Zitting Cisticola	<i>Cisticola juncidus</i>	969	
Golden-headed Cisticola	<i>Cisticola exilis</i>	525	
Acrocephalidae			new family; formerly included in Sylviidae
Australian Reed-Warbler	<i>Acrocephalus australis</i>	524	treated as conspecific with Clamorous Reed-Warbler <i>A. stentoreus</i>
Oriental Reed-Warbler ^V	<i>Acrocephalus orientalis</i>	872	
Megaluridae			new family; formerly included in Sylviidae
Tawny Grassbird	<i>Megalurus timoriensis</i>	523	
Little Grassbird	<i>Megalurus gramineus</i>	522	
Rufous Songlark	<i>Cincloramphus mathewsi</i>	509	
Brown Songlark	<i>Cincloramphus cruralis</i>	508	
Spinifexbird	<i>Eremiornis carteri</i>	507	
Timaliidae			new family; formerly Zosteropidae
Christmas Island White-eye ^{C,CKI}	<i>Zosterops natalis</i>	956	
Pale White-eye	<i>Zosterops citrinella</i>	577	<i>Z. citrinellus</i>
Yellow White-eye	<i>Zosterops luteus</i>	576	
Silvereye	<i>Zosterops lateralis</i>	574	
Robust White-eye ^{L,HE}	<i>Zosterops strenuus</i>	943	
Slender-billed White-eye ^N	<i>Zosterops tenuirostris</i>	960	
White-chested White-eye ^{WE?}	<i>Zosterops albugularis</i>	961	
Phylloscopidae			new family; formerly included in Sylviidae
Arctic Warbler ^{V,AV}	<i>Phylloscopus borealis</i>	831	
Hirundinidae			



White-backed Swallow	<i>Cheramoeca leucosterna</i>	358	<i>C. leucostern us</i>
Barn Swallow	<i>Hirundo rustica</i>	879	
Welcome Swallow	<i>Hirundo neoxena</i>	357	
Fairy Martin	<i>Petrochelidon ariel</i>	360	<i>Hirundo</i>
Tree Martin	<i>Petrochelidon nigricans</i>	359	<i>Hirundo</i>
Red-rumped Swallow ^{V,CV}	<i>Cecropis daurica</i>	787	
Asian House Martin ^{CV}	<i>Delichon dasypus</i>	757	not on list
Pycnonotidae			
Red-whiskered Bulbul ^l	<i>Pycnonotus jocosus</i>	990	
Muscicapidae			
Blue Rock Thrush ^V	<i>Monticola solitarius</i>	723	not on list
Isabelline Wheatear ^V	<i>Oenanthe isabellina</i>	763	not on list
Narcissus Flycatcher ^V	<i>Ficedula narcissina</i>	725	not on list
Blue-and-White Flycatcher ^{V,CV}	<i>Cyanoptila cyanomelana</i>	726	not on list
Turdidae			new family; formerly included in Muscicapidae
Bassian Thrush	<i>Zoothera lunulata</i>	779	
Russet-tailed Thrush	<i>Zoothera heinei</i>	780	
Common Blackbird	<i>Turdus merula</i>	991	
Island Thrush ^{C,LH,ENE}	<i>Turdus poliocephalus</i>	936	
Song Thrush ^l	<i>Turdus philomelos</i>	992	
Sturnidae			
Singing Starling ^{TS}	<i>Aplomis cantoroides</i>	724	<i>Aplonis</i> ; supplementary list
Tasman Starling ^{N,E,LH,E}	<i>Aplomis fusca</i>	733	<i>Aplonis</i>
Metallic Starling	<i>Aplomis metallica</i>	674	<i>Aplonis</i>
Common Starling ^l	<i>Sturnus vulgaris</i>	999	
Purple-backed Starling ^{CV}	<i>Sturnus sturninus</i>	736	not on list
Rosy Starling ^V	<i>Sturnus roseus</i>		not on list
Common Myna ^l	<i>Sturnus tristis</i>	998	<i>Acridotheres</i>
Nectariniidae			
Red-capped Flowerpecker ^{TS}	<i>Dicaeum geelvinkianum</i>	751	not on list
Mistletoebird	<i>Dicaeum hirundinaceum</i>	564	
Olive-backed Sunbird	<i>Nectarinia jugularis</i>	572	<i>Yellow-bellied</i> Sunbird
Estrildidae			new family; formerly included in Passeridae
Zebra Finch	<i>Taeniopygia guttata</i>	653	



Double-barred Finch	<i>Taeniopygia bichenovii</i>	655	
Long-tailed Finch	<i>Poephila acuticauda</i>	666	
Black-throated Finch	<i>Poephila cincta</i>	667	
Masked Finch	<i>Poephila personata</i>	669	
Crimson Finch	<i>Neochmia phaeton</i>	664	
Star Finch	<i>Neochmia ruficauda</i>	663	
Plum-headed Finch	<i>Neochmia modesta</i>	661	
Red-browed Finch	<i>Neochmia temporalis</i>	662	
Diamond Firetail	<i>Stagonopleura guttata</i>	652	
Beautiful Firetail	<i>Stagonopleura bella</i>	650	
Red-eared Firetail	<i>Stagonopleura oculata</i>	651	
Painted Finch	<i>Emblema pictum</i>	654	
Blue-faced Parrot-Finch	<i>Erythrura trichroa</i>	660	
Gouldian Finch	<i>Erythrura gouldiae</i>	670	
Nutmeg Mannikin ^I	<i>Lonchura punctulata</i>	983	
Pale-headed Munia ^{AV}	<i>Lonchura pallida</i>	817	not on list
Yellow-rumped Mannikin	<i>Lonchura flaviprymna</i>	658	
Chestnut-breasted Mannikin	<i>Lonchura castaneothorax</i>	657	
Java Sparrow ^{CI}	<i>Lonchura oryzivora</i>	806	
Pictorella Mannikin	<i>Heteromunia pectoralis</i>	659	
Passeridae			
House Sparrow ^I	<i>Passer domesticus</i>	995	
Eurasian Tree Sparrow ^I	<i>Passer montanus</i>	994	
Motacillidae			
Australasian Pipit	<i>Anthus novaeseelandiae</i>	647	treated as conspecific with Richard's Pipit <i>A. novaeseelandiae</i>
Red-throated Pipit ^V	<i>Anthus cervinus</i>	766	
Pechora Pipit ^A	<i>Anthus gustavi</i>	758	supplementary list
Eastern Yellow Wagtail	<i>Motacilla tschutschensis</i>		treated as conspecific with Yellow Wagtail <i>M. flava</i>
Green-headed Yellow Wagtail	<i>Motacilla taivana</i>	8611	treated as conspecific with Yellow Wagtail <i>M. flava</i>
Citrine Wagtail ^V	<i>Motacilla citreola</i>	876	
Grey Wagtail ^{V,C}	<i>Motacilla cinerea</i>	875	
White Wagtail ^V	<i>Motacilla alba</i>	874	Black-backed Wagtail <i>M.a. lugens</i> treated as separate species
Fringillidae			
Common Chaffinch ^{LHIV,NV}	<i>Fringilla coelebs</i>	788	



European Goldfinch ¹	<i>Carduelis carduelis</i>	996	
Common Redpoll ^{LHVM}	<i>Acanthis flammea</i>	790	<i>Carduelis</i>
Common Greenfinch ¹	<i>Chloris chloris</i>	997	<i>Carduelis</i>
Emberizidae			
Yellowhammer ^{LHV}	<i>Emberiza citrinella</i>	789	

